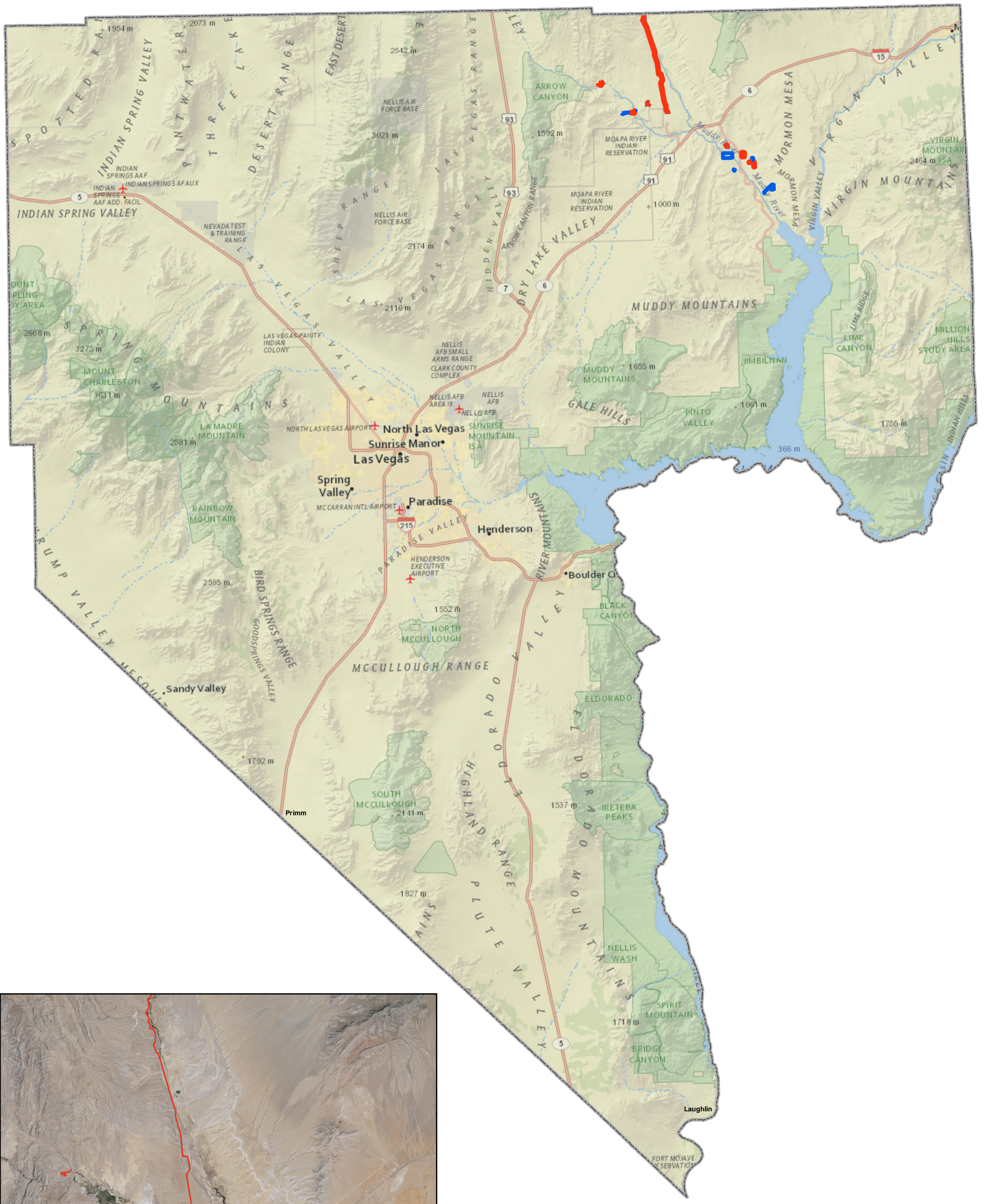


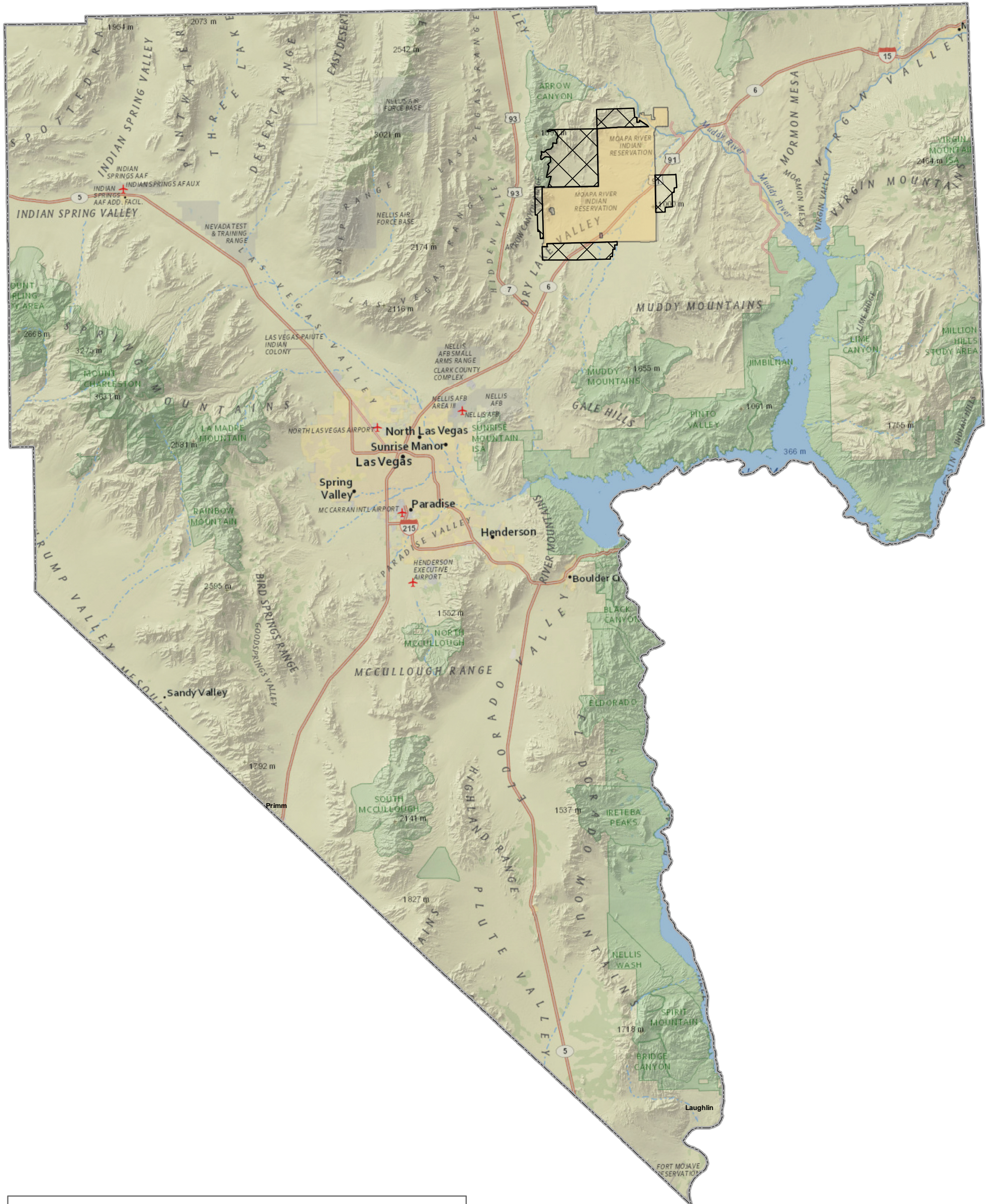
Southern Nevada Economic Development and Conservation Act Moapa Valley Water District - Facilities and Land Conveyances, November 13, 2019






— Moapa Valley Water District Land Conveyances
— Moapa Valley Water District Facilities
 Clark County Boundary

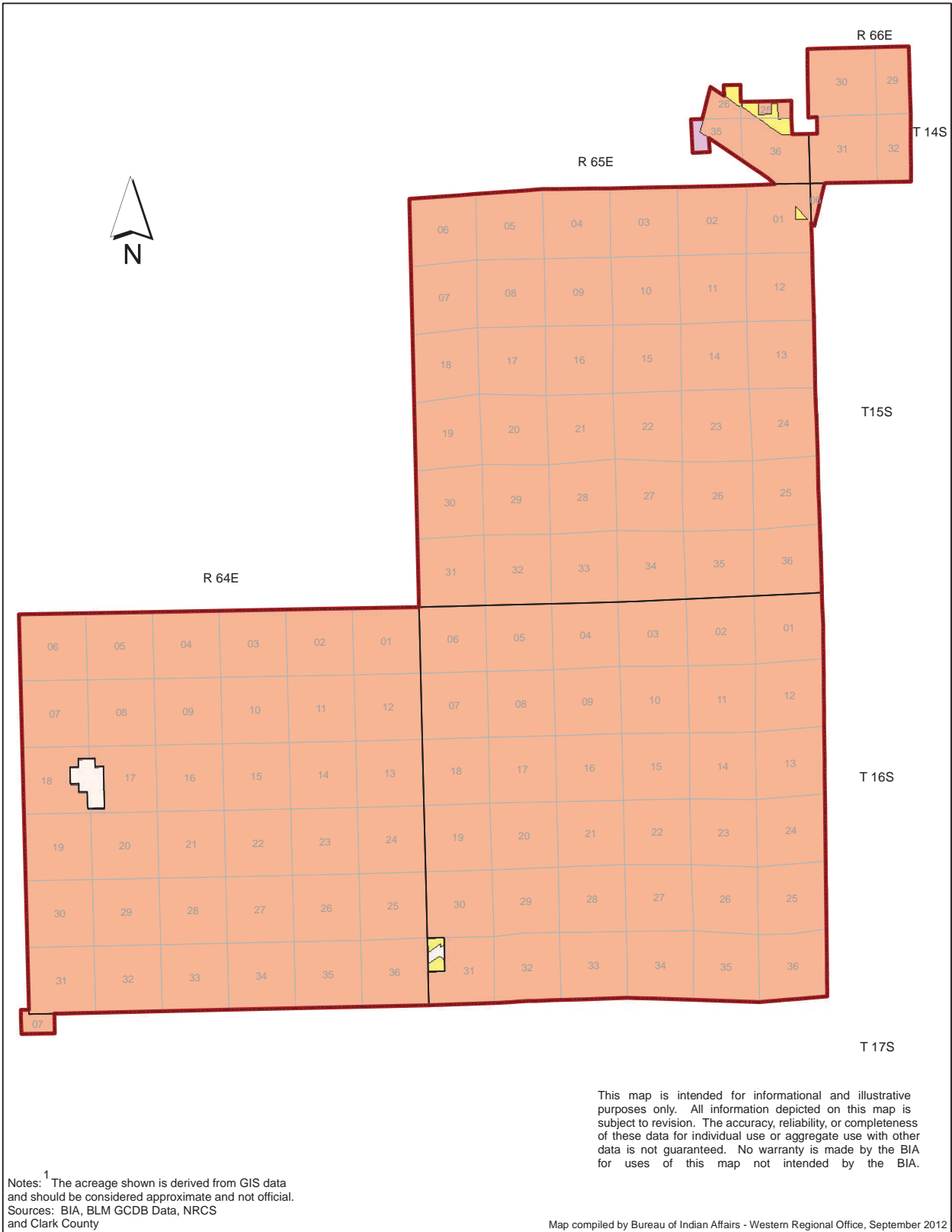
0 10 20 40
Miles

Southern Nevada Economic Development and Conservation Act Reservation Expansion Land, November 13, 2019




	Reservation Expansion (~41,028 Acres)
	Moapa River Reservation
	Clark County Boundary

0 10 20 40
Miles




General Land Status ¹

- Tribal Trust (72,602 Acres)
- Tribal Fee (196 Acres)
- U.S. Dept. of Interior Fee Land (64 Acres)
- Private (199 Acres)
- Exterior Boundary of Reservation and Trust Lands



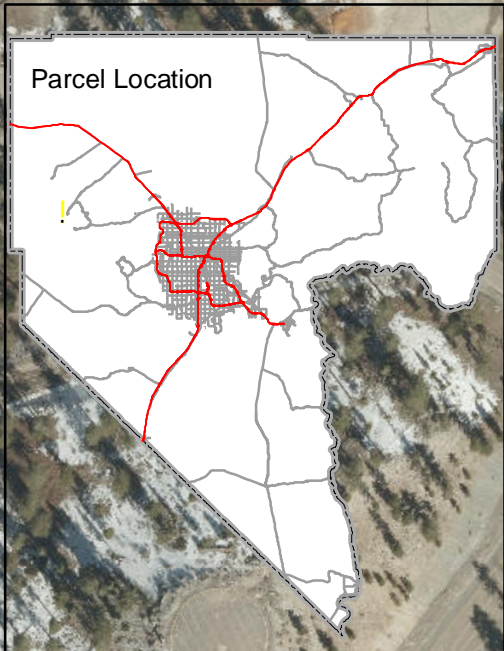
General Land Status
Moapa Band of Paiutes
Moapa River Indian Reservation
Clark County, Nevada



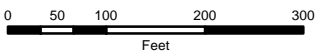
Southern Nevada Economic Development and Conservation Act
Federal Parcel, Camp Lee Canyon, November 13, 2019

Lee Canyon Road

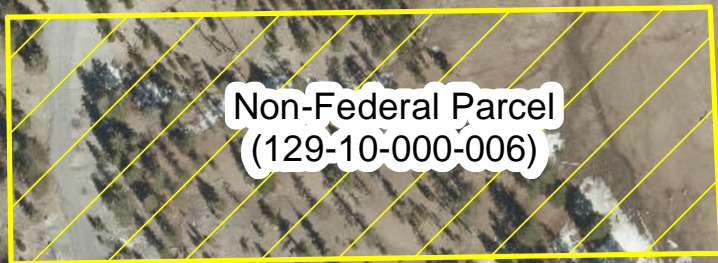
Camp Lee Canyon
129-10-000-016



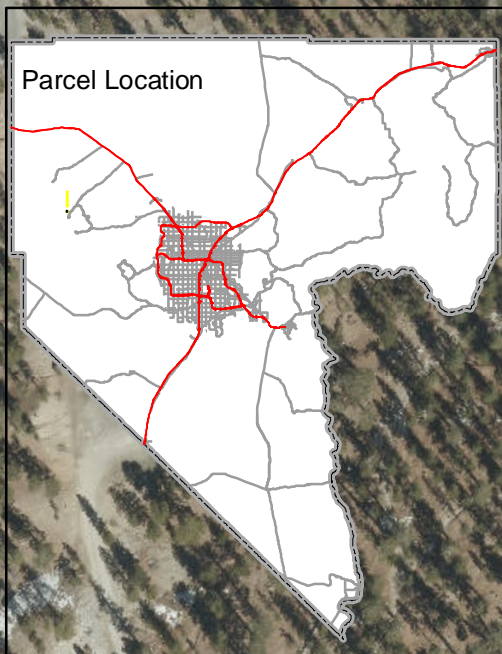
 Camp Lee Canyon



Southern Nevada Economic Development and Conservation Act
Non-Federal Parcel, Lee Meadows, November 13, 2019



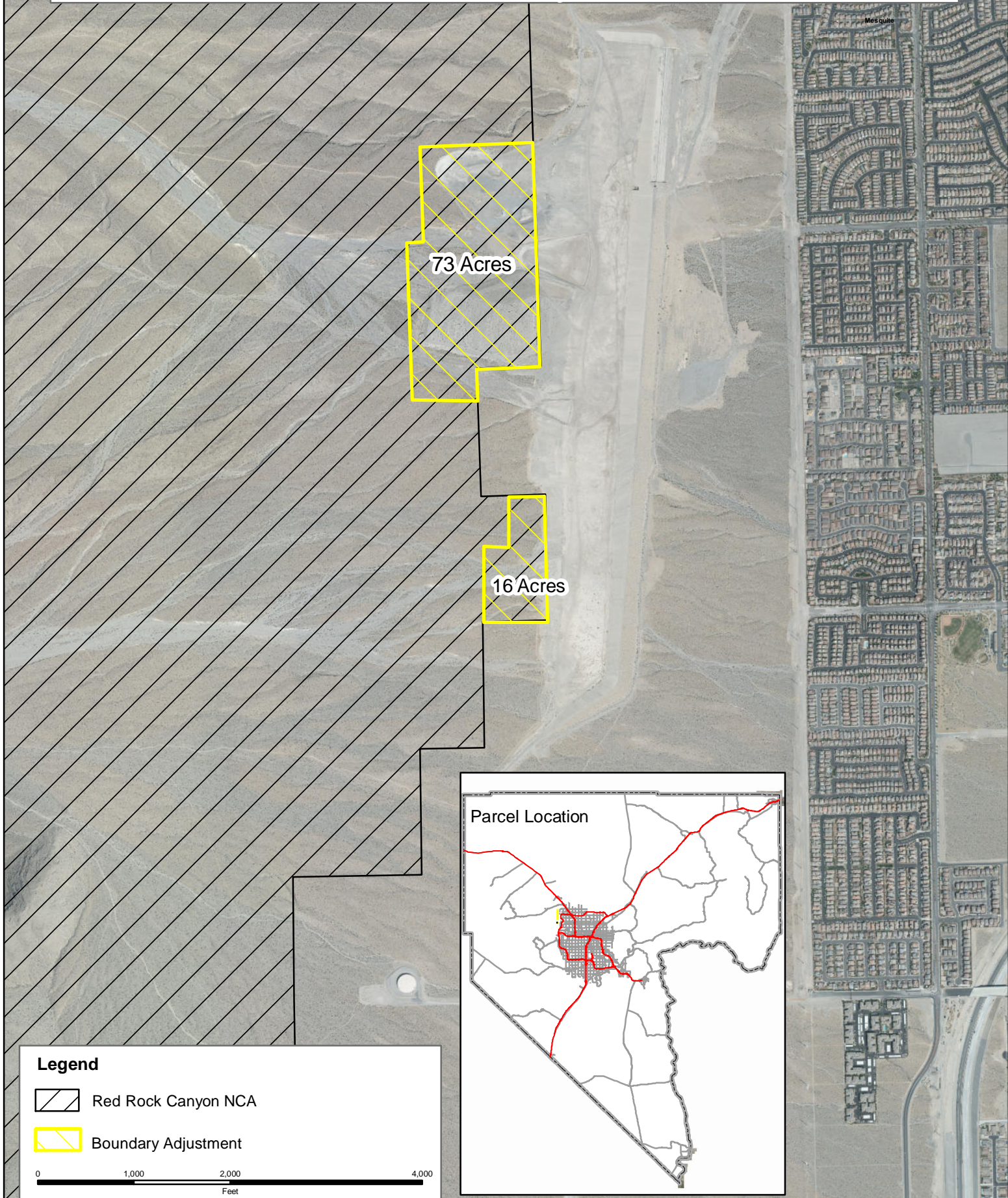
Lee Canyon Road



Non-Federal Parcel

0 50 100 200 300
Feet

Southern Nevada Economic Development and Conservation Act Red Rock Canyon NCA Boundary Adjustment, November 13, 2019

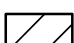



73 Acres

16 Acres

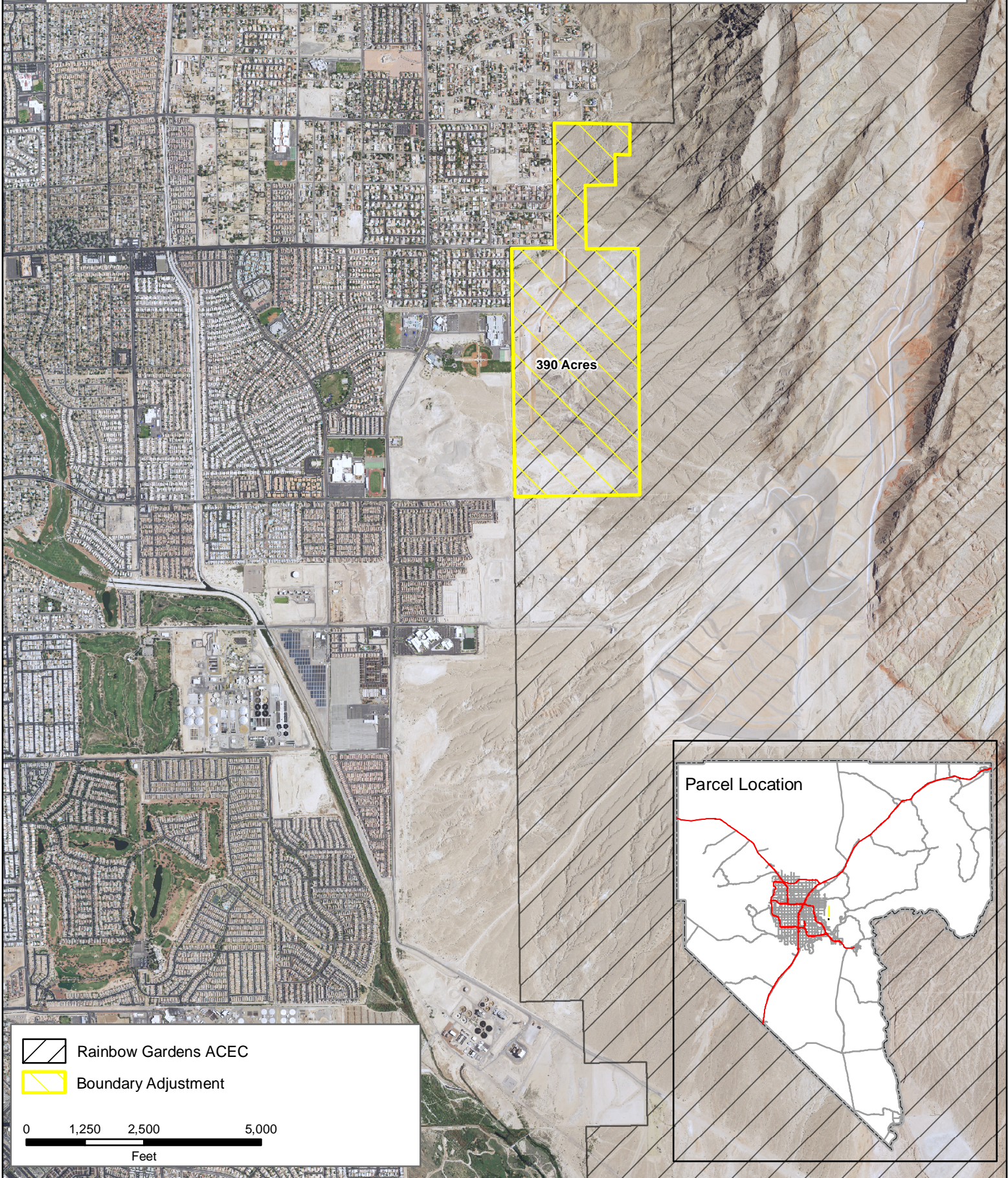
Parcel Location

Legend

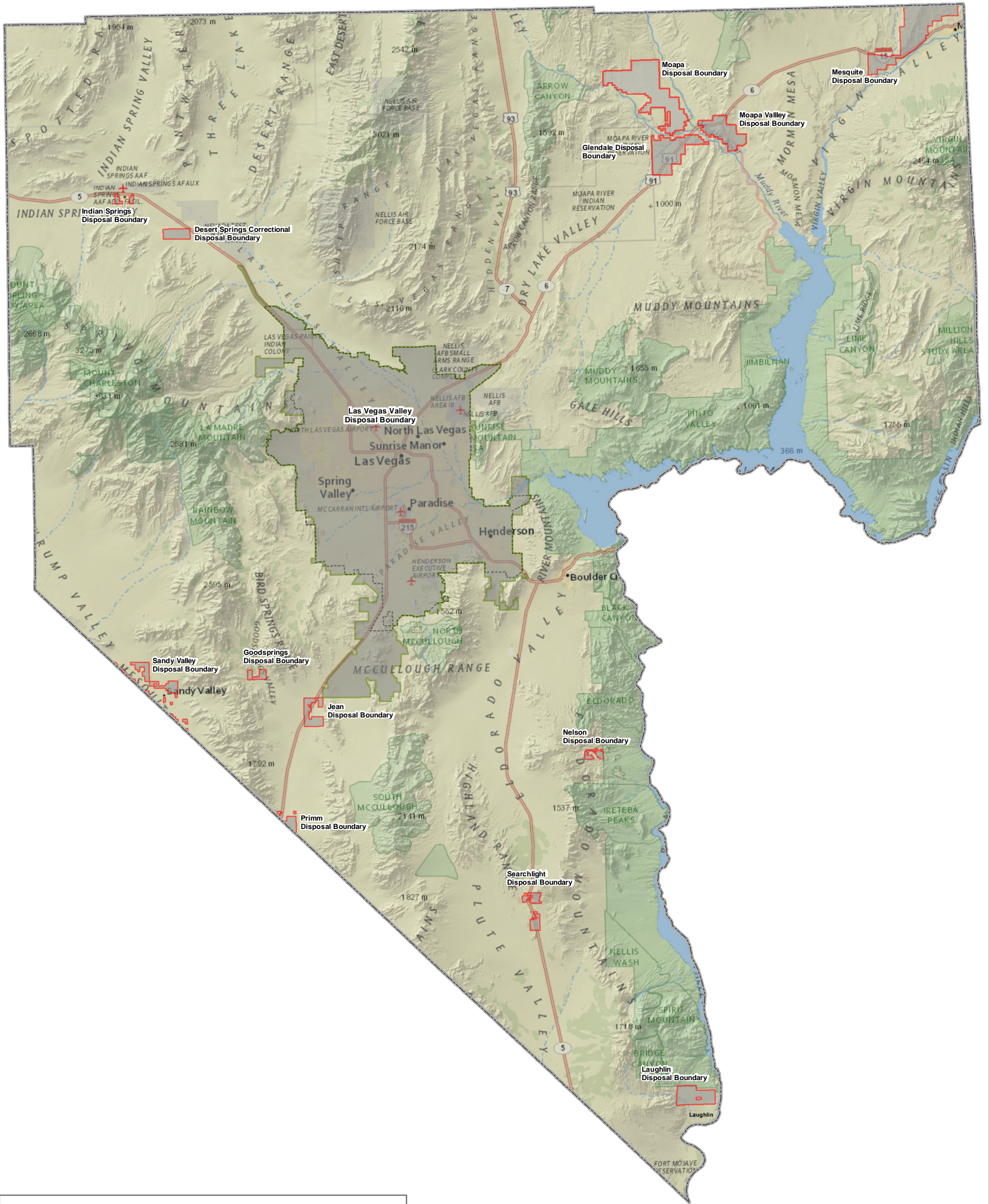
-  Red Rock Canyon NCA
-  Boundary Adjustment

0 1,000 2,000 4,000
Feet

Southern Nevada Economic Development and Conservation Act Rainbow Gardens ACEC Boundary Adjustment, November 13, 2019



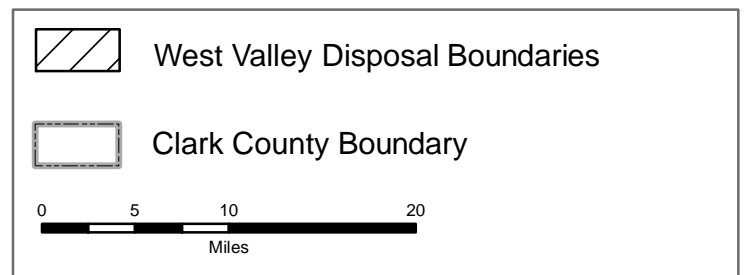
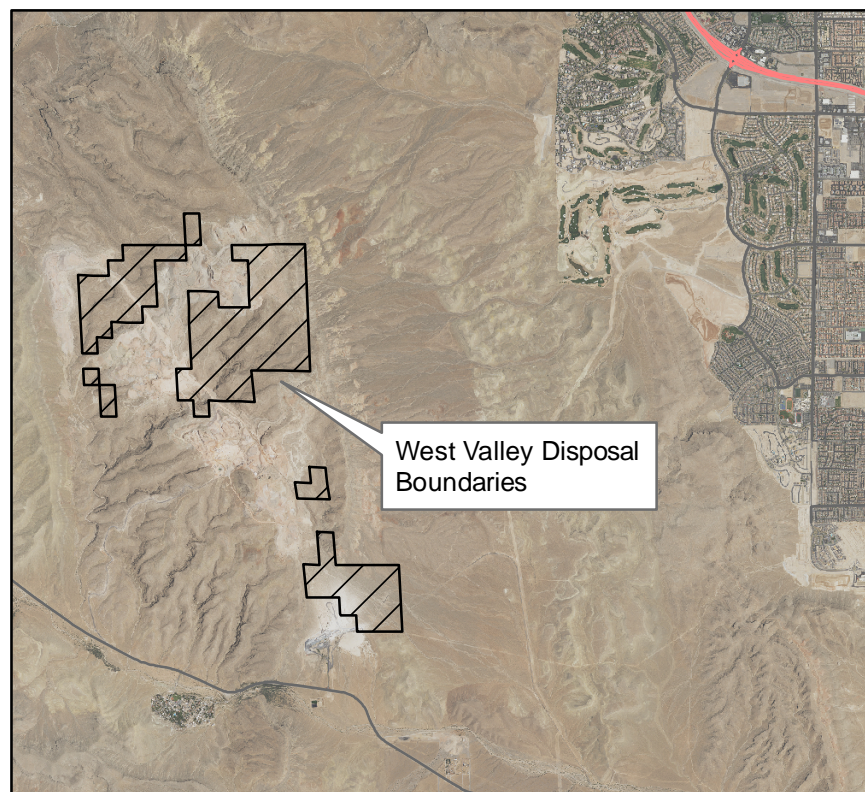
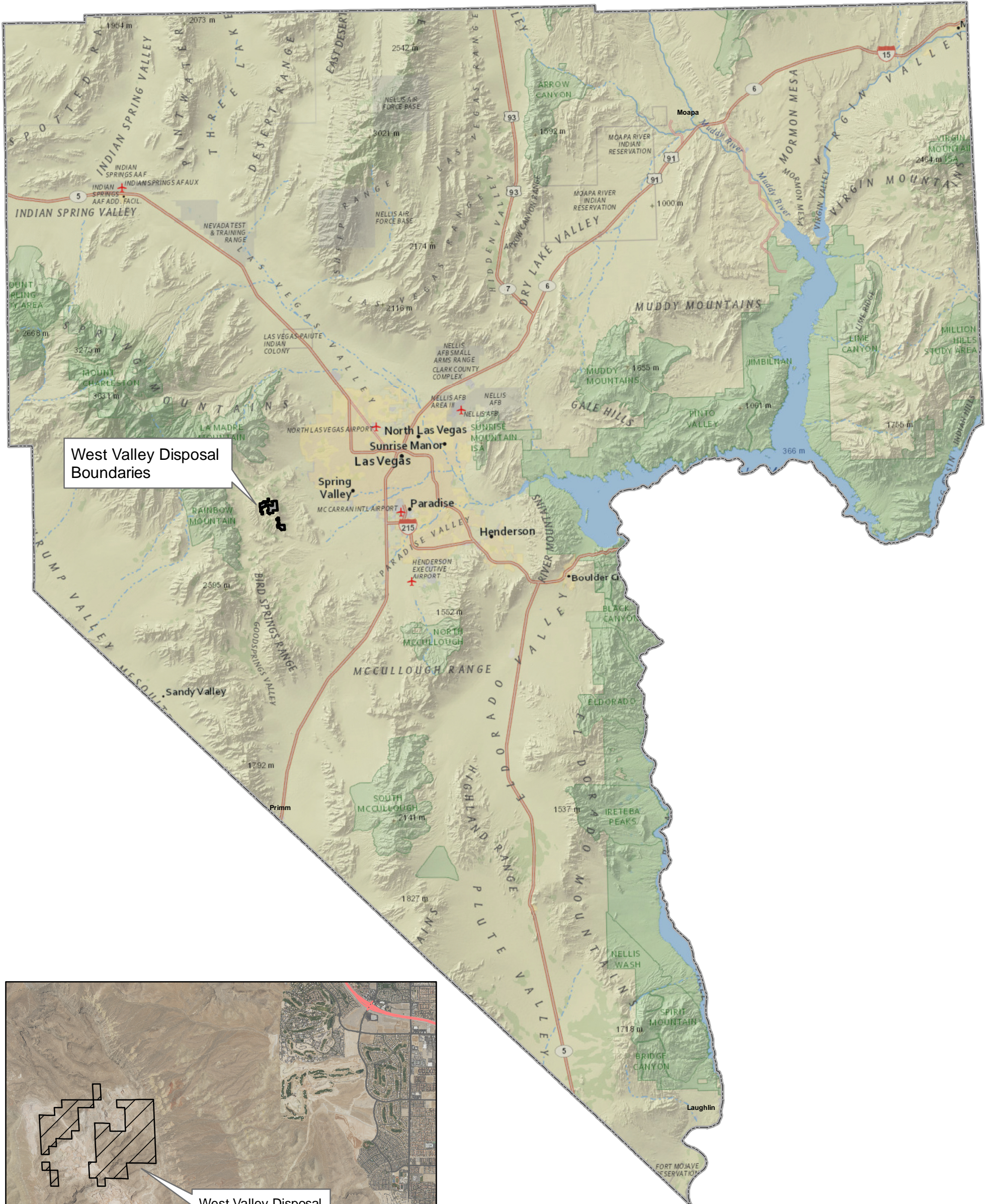
Southern Nevada Economic Development and Conservation Act Land Disposal, November 13, 2019



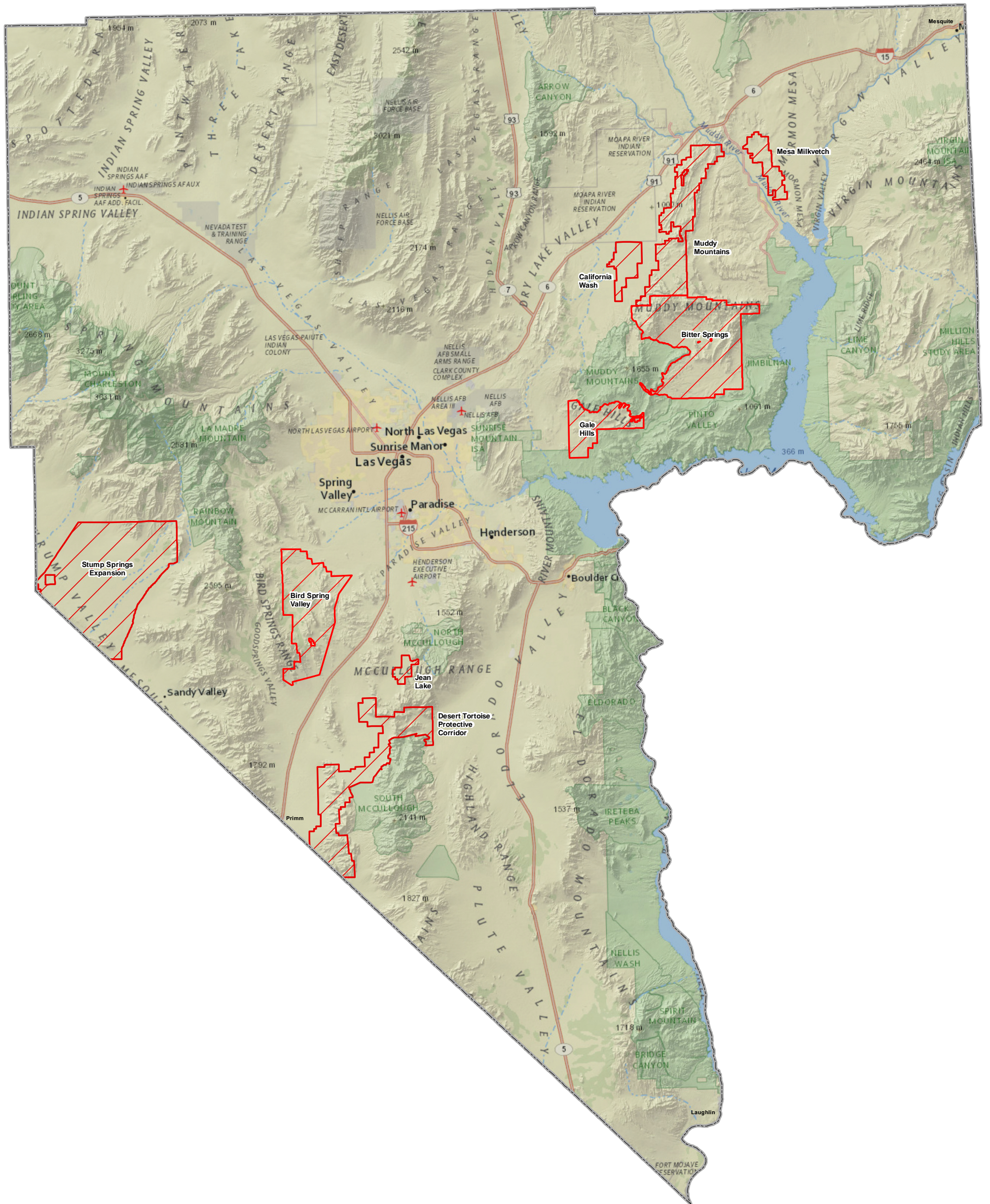
Expanded Las Vegas Valley Disposal Boundary (~49,833 Expanded Acres)
 Other Clark County Disposal Boundaries (~65,471 Acres)
 Current Las Vegas Valley Disposal Boundary (~325,255)
 Clark County Boundary

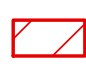

0 10 20 40
Miles

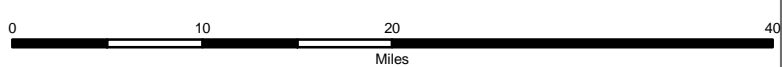
Southern Nevada Economic Development and Conservation Act West Valley Disposal Boundaries, November 13, 2019



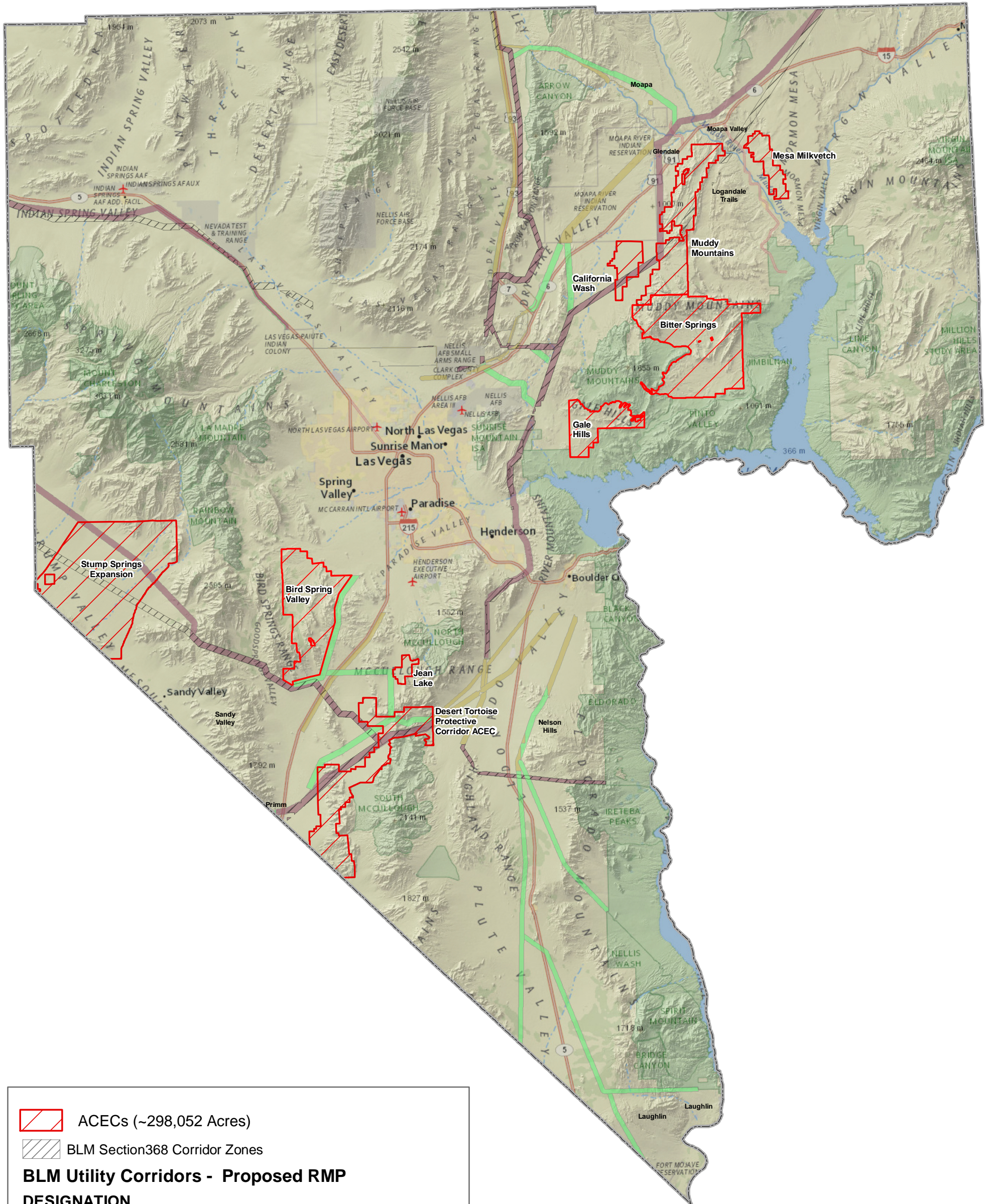
Southern Nevada Economic Development and Conservation Act Areas of Critical Environmental Concern, November 13, 2019



-  ACECs (~298,052 Acres)
-  Clark County Boundary



Southern Nevada Economic Development and Conservation Act Transportation and Utility Corridors with ACECs November 13, 2019



ACECs (~298,052 Acres)
 BLM Section 368 Corridor Zones
BLM Utility Corridors - Proposed RMP DESIGNATION
 Designated Corridor
 Legislative Corridor
 West Wide Energy Corridor
 Clark County Boundary

0 10 20 40
Miles